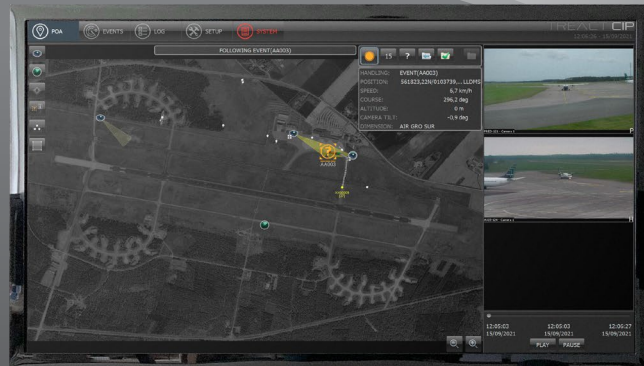




WIDE AREA PROTECTION

T.react CIP ENTRY LEVEL





Automated Wide Area Protection

Today, most critical infrastructure is protected by fences and walls, which are easily breached.

Typically, traditional electronic perimeter protection solutions only monitor outer boundary structures and lines, thus ignoring threats from the inside or a hostile build-up further away that can have catastrophic consequences. In addition, these technologies quickly become obsolete investments once a subject has breached the line.

With T.react CIP Entry Level, you get full area coverage of a large area. Possible both outside and inside your perimeter.

You can utilize T.react CIP Entry Level as a stand alone Wide Area Protection system engineered to analyze data from a SCANTER 1002 radar and present a picture of activity in your area.

You can also utilize T.react CIP Entry Level to cover large areas in a full scale Milestone XProtect Corporate based surveillance system. Where the T.react CIP Entry Level system can monitor larger areas and feed alarms into your (existing) Milestone system providing true synergy between the Milestone and T.react CIP Entry Level systems.

T.react CIP Entry Level is the most cost effective intelligent Wide Area Protection solution to date. A system which provides maximum levels of security, situational awareness, and control of your external environment. A solution designed to greatly improve your chances of preventing a disaster from happening.

Operational Capabilities

Picture of Activity

The T.react CIP Entry Level system ensures that all relevant events are automatically detected, analyzed, prioritized, and presented according to severity – allowing the operator to focus on things that matter whilst the system sorts the action from distraction. The system is designed to provide the means of identifying and tracking a threat, not just detecting and classifying it.

Early Warning

In most crisis situations, events escalate quickly and unpredictably. Every second counts, as you try to understand and regain control over the situation. Time and control are the two key factors in preventing a disaster from happening. T.react CIP Entry Level greatly enhances this capability, by presenting only relevant and accurate early warning information to your operator. This logical and automatic presented information saves time and allows for immediate action.

Efficient Decision Making

T.react CIP Entry Level focus on operator simplicity. We believe that your operators and response staff are the ones to mitigate incidents from happening. The operator's task is to coordinate a response. This can only be done efficiently if information is produced automatically whilst he directs his resources to the correct interception point. Simplicity is a key factor together with fast and accurate information that is prioritized and presented to allow instant decisions before moving on to the second-most critical incident. Operators should not sit and "work the system". They should make decisions based on real time information presented to them. When a crisis situation occurs, the last thing needed is an operator fiddling with mouse, keyboard and joystick whilst trying to switch between and control cameras to follow an intruder.



RELIABLE OPERATIONAL PICTURE



MODERN USER EXPERIENCE



SECURITY FRAMEWORK

Individual Set-Up of Security Procedures



EVENT EVALUATION



AUTOMATIC SENSOR CONTROL



AUTOMATED REPORT

Product Characteristics

Proven and Reliable

Terma has more than 30 years of experience in developing Command & Control systems for use in extreme conditions and hostile environments. Developing Command & Control systems require proficiency in integrating other sensors, and the capability to scale as requirements change. Our Command & Control knowhow has been vital to create the world's most advanced Intelligent Wide Area Protection Solution, T.react CIP.

Scalability

T.react CIP Entry Level is delivered in a basic configuration with one operator position, one SCANTER 1002 radar and one medium/long range day and night camera with EO and IR lenses.

It is possible to add a few extra cameras by buying additional licenses. If more than one sensor shall be used or more simultaneous operators are needed an upgrade to T.react CIP corporate is mandatory. A sell back upgrade package can be offered.

Service & Support

At Terma, we know the importance of protecting your assets 24/7. That is why we offer global Support & Service Agreements for up to 15 years, supporting long time sustainability and obsolescence management.

Doing Business with Terma

A World Leader in Detection Technologies

Terma has been a world leader within radar detection technologies for more than 60 years. Our +3,000 Terma radar systems are protecting borders, harbors, airports, coast lines and wind farms worldwide. More than 85% of all major airports around the world and 65% of all coastal shores rely on Terma's sensor technology, for unprecedented land, sea, and air target detection.

Key Benefits

- Automatic wide area threat detection, tracking, and identification.
- Handling of both internal and external threats.
- Unsurpassed user interface. Simple, reliable and easy to use.
- Support to handle multiple incidents simultaneously.
- Virtual perimeters can be designed to maximize reaction time.



Operating in the aerospace, defense, and security sector, Terma supports customers and partners all over the world. With more than 1,600 committed employees globally, we develop and manufacture mission-critical products and solutions that meet rigorous customer requirements.

At Terma, we believe in the premise that creating customer value is not just about strong engineering and manufacturing skills. It is also about being able to apply these skills in the context of our customers' specific needs. Only through close collaboration and dialog can we deliver a level of partnership and integration unmatched in the industry.

Our business activities, products, and systems include: command and control systems; radar systems; self-protection systems for ships and aircraft; space technology; and advanced aerostructures for the aircraft industry.

Terma has decades of hands-on know-how in supporting and maintaining mission-critical systems in some of the world's most hostile areas. Terma Support & Services offers through-life support of all our products to maximize operational availability, enhance platform lifetime, and ensure the best possible cost of ownership.

Headquartered in Aarhus, Denmark, Terma has subsidiaries and operations across Europe, in the Middle East, in Asia Pacific as well as a wholly-owned U.S. subsidiary, Terma Inc., with offices in Washington D.C., Georgia and Texas.

© Terma A/S - 01/2022